

UNI°COLD Monitoring System

GMP Manufacturers, distributors, wholesalers



Temperature & humidity excursions alarms by text messages, phone call and email

Real-time dashboards to monitor your operations at a glance

Automated analysis reports sent to your inbox when you need them

Wireless Temperature & Humidity Sensor



Measurement : -20°C to 40°C / 0% to 100% RH
 Accuracy: ±0.5°C / ±3% RH
 Memory: up to 10 days
 Power: 2400mAh Lithium Battery (1)
 Probe: Built-in (optional external probe for ultra-low temp.)

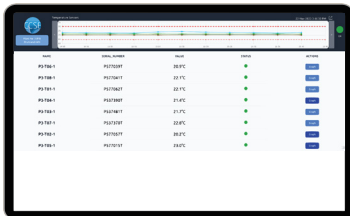
Yearly calibration certificate included

Gateway

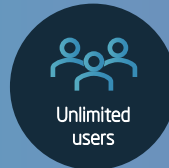


Communication : Wi-Fi, Ethernet
 Power: 5V 2A

UNI°COLD Display



- Keep everyone alert at all time with a wall-mounted dedicated UNI°COLD display
- Catch drifting patterns and react fast before triggering critical alarms using the trend chart
- Never miss a critical event with the visual alarm indicator



Unlimited users



Technical support



User training



Validation Included

Gateway
\$250
 One-time fee per gateway

Sensor
\$28
 Monthly fee per sensor

Advanced Support
\$16
 Monthly fee per location