

Pre-Qualified Biodegradable EPS Packaging

Sizes



Temperature

Frozen
Refrigerated
Ambient

Duration

Up to
72h

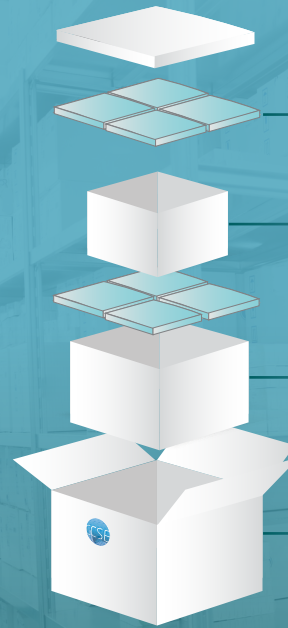
Benefits

Easy to
condition

Easy to
assemble

Affordable

Up to 100% eco-friendliness



● Recyclable & drain safe Gel Packs

● Recyclable corrugated payload box

● Biodegradable EPS molded container

● Recyclable corrugated outer box

Choose your Gel Packs



Sturdy & Reusable



Recyclable & Drain Friendly

Canada-wide manufacturing & distribution



BioEPS packaging specifications

BioEPS Model	Outside Dimensions	Inside Dimensions	Payload Sizes	Temperature Range*	Duration	Origin
BioEPS15108 Small	13.25" x 11.5" x 9.25"	10.25" x 8.5" x 6.25"	10.25" x 8.5" x 3"	2°C to 8°C	48 hours, all seasons	Toronto, ON
BioEPS20165 Small	14.875" x 11.625" x 11.75"	10" x 6.75" x 6.75"	10" x 6.75" x 3"	2°C to 8°C	48 hours, all seasons	Calgary, AB
BioEPS20100 Medium	15.25" x 13.5" x 14.5"	11" x 9.5" x 10"	10" x 7" x 5.25"	2°C to 8°C	72 hours, all seasons	Toronto, ON Calgary, AB
BioEPS20105 Large	17.5" x 14.5" x 14.0"	13.5" x 10.5" x 11.0"	13" x 9" x 5"	2°C to 8°C	72 hours, all seasons	Calgary, AB
BioEPS77135 Large	22" x 17" x 20"	19.5" x 14.5" x 17.5"	15.5" x 10.5" x 10"	2°C to 8°C	72 hours, all seasons	Toronto, ON

*Temperature Range: Packaging solutions can be qualified for ambient (15°C to 25°C) or frozen (-20°C and below) shipments upon request.

Custom design & qualification

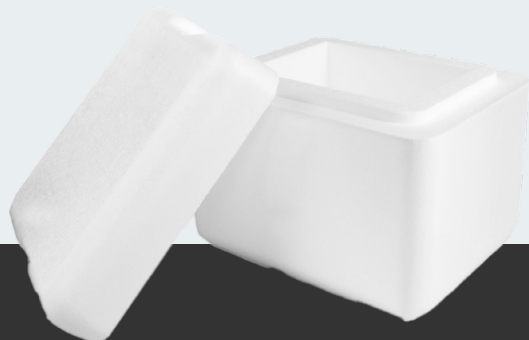
The optimal solution for your specific payload requirements and shipping route profiles.

Packaging validation

Packaging lifecycle validation offered at no costs* (DQ/IQ/OQ/PQ).

Standard EPS

Also offered with a recycling program option.



*Certain conditions apply.

BioEPS, how does it work?

EPS biodegradability is proven through ASTM D5511 testing to degrade well over 90% in four years.* This technology employs an anaerobic enzymatic biodegradation process, meaning bugs in the landfill eat it. While standard EPS takes decades to degrade, products made with BioEPS technology speed up biodegradation by inviting more bugs to the table!

*BioEPS biodegrades 94% over four years compared to cellulose using the ASTM D5511 test that simulates wetter and biologically active landfills. The stated rate and extent of degradation do not mean that BioEPS will continue to degrade.